


2025 Climate Action Strategy Listening Session

Technical questions about zoom? Please email:

Kayla.Michaud.INT@energy.ri.gov

We will get started shortly!



2025 Climate Action Strategy

Listening Session on
Request for
Information (RFI)

May 25, 2023

RIEC⁴

Act on Climate Mandates

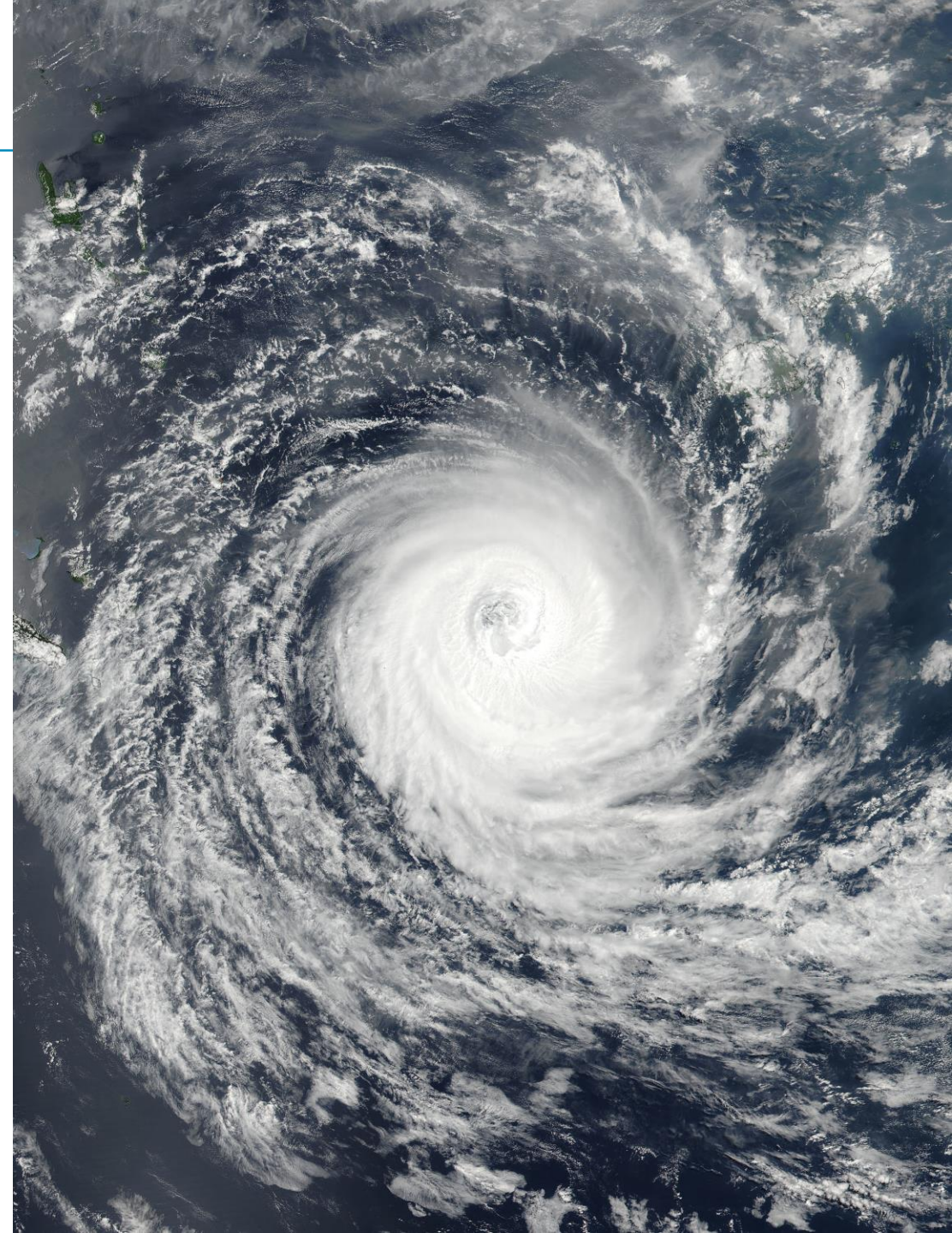
2025 Climate Action Strategy: By 12-31-2025, the EC4 shall complete a plan which includes strategies, programs and actions to meet the Act on Climate's economy-wide emissions reduction mandates of:

- 45% below 1990 levels by 2030
- 80% below 1990 levels by 2040
- Net-zero emissions by 2050
- Today's discussion informs the development of the Request for Proposal (RFP) the EC4 will issue later this year to identify a vendor which will assist with the development of the 2025 Climate Action Strategy.
- Information related to the 2025 Climate Action Strategy can be found under the "Act on Climate" tab on www.climatechange.ri.gov

Facilitated Discussion

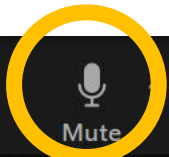
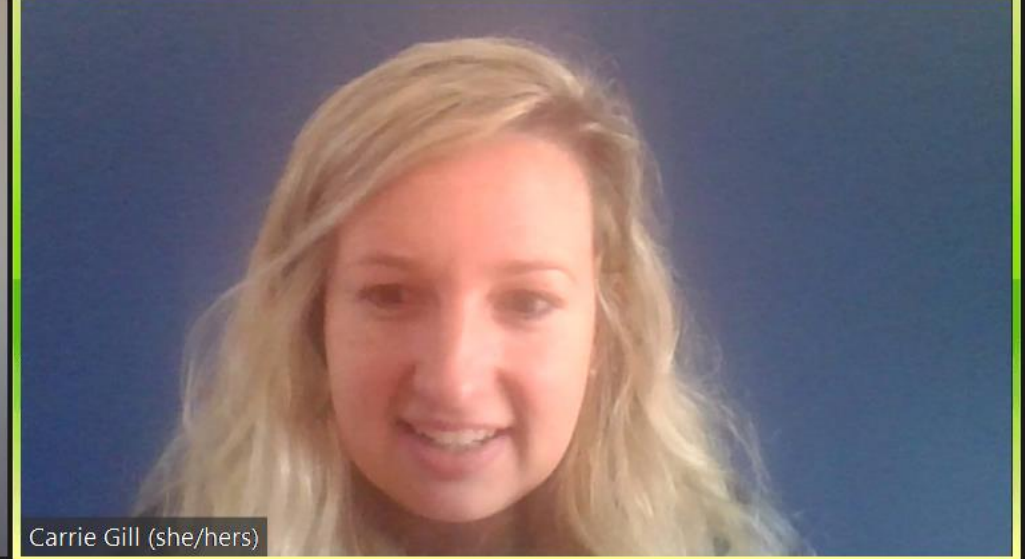
1. What does the EC4 need to consider as it begins developing a robust Request for Proposals (RFP) to identify a vendor which will assist with the development of the 2025 Climate Action Strategy?

2. Other considerations?



How to Participate

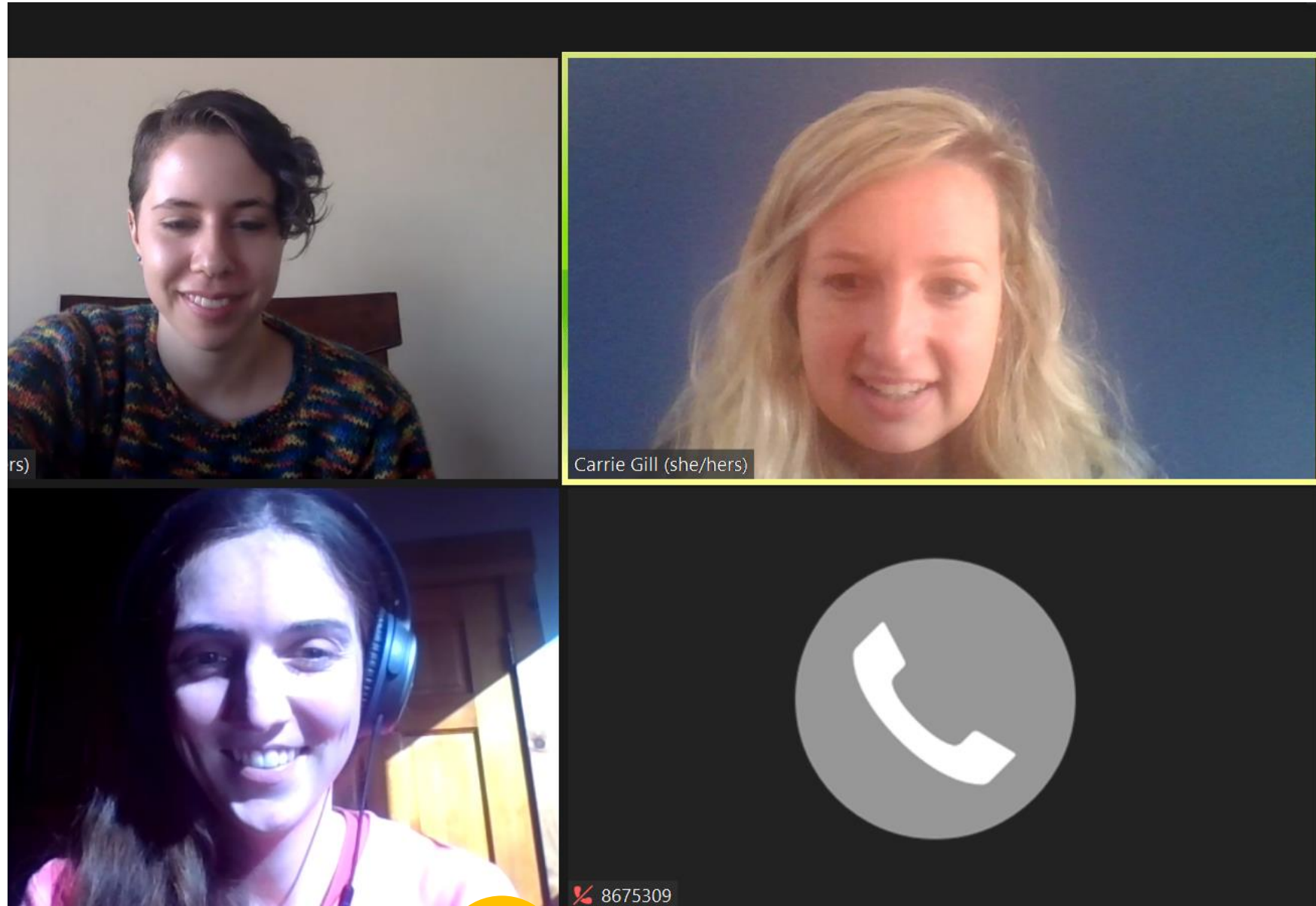
- **Unmute** yourself using the icon at the bottom right of the screen and speak your question or comment.



Leave

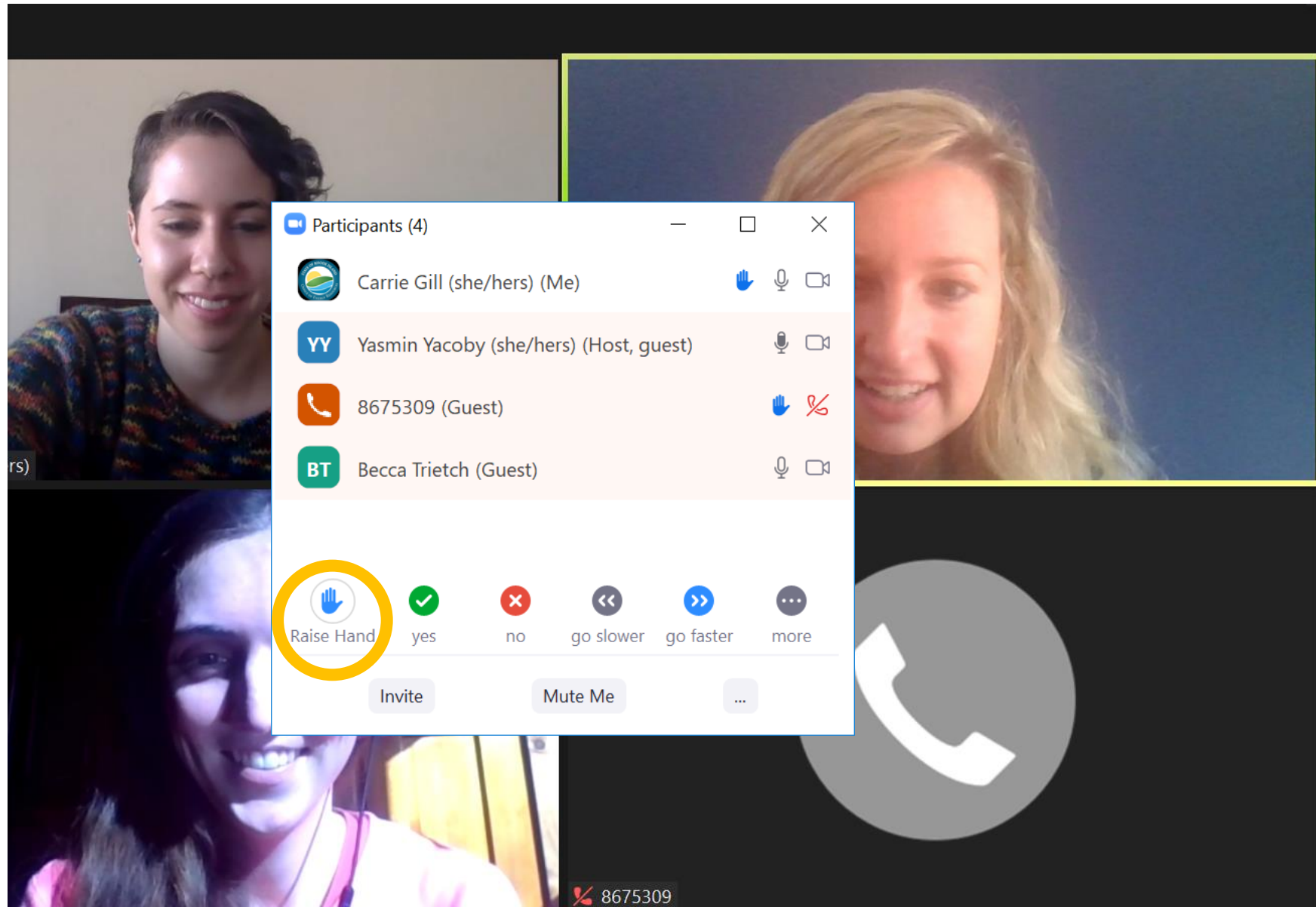
How to Participate

- Open the **chat box** by clicking on the icon at the bottom of your screen.
- Type your question or comment into chat.
- We will be monitoring the chat for comments offered during this session.



How to Participate

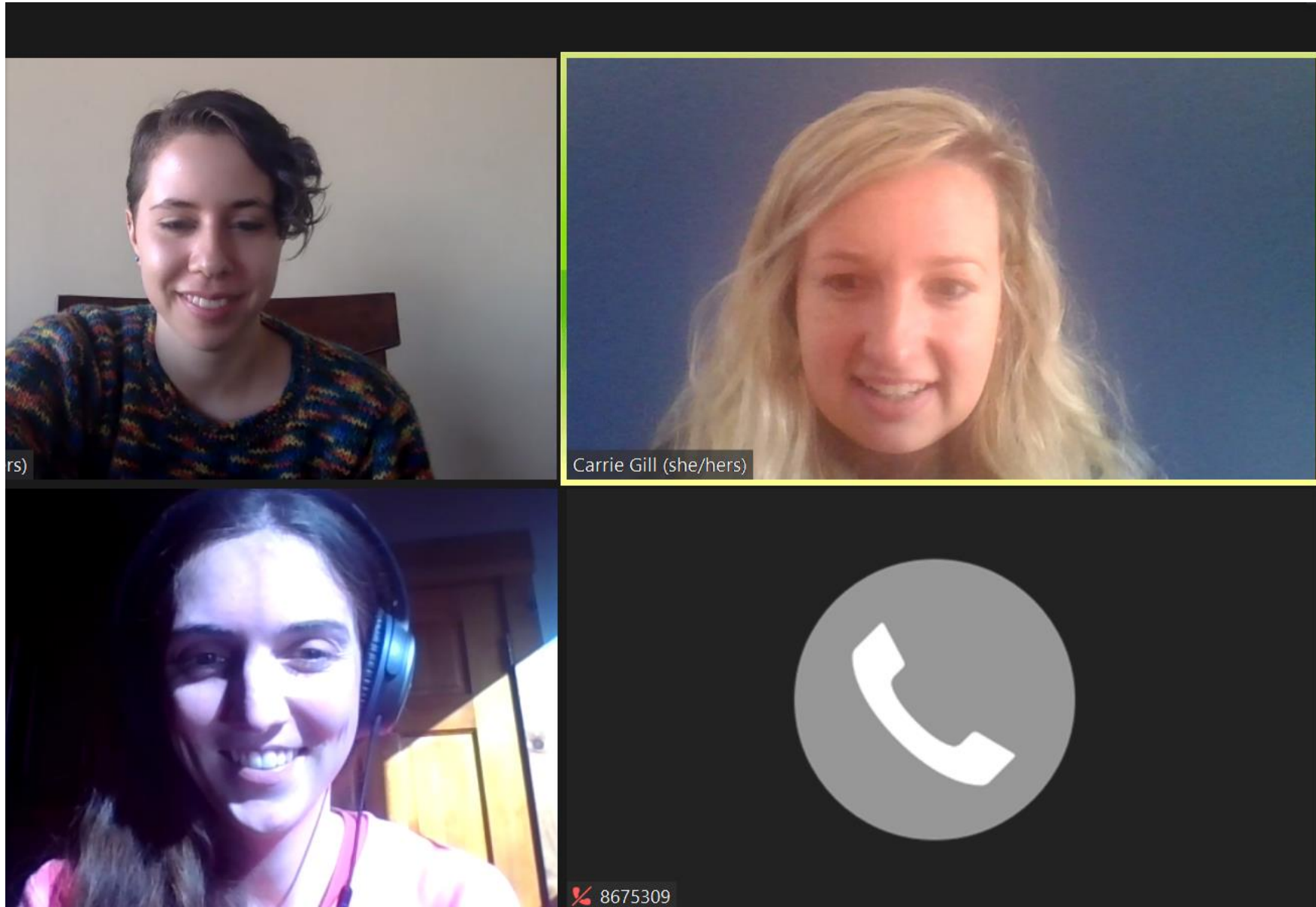
- Click the participants icon at the bottom of your screen then click the **raise hand** icon at the bottom left of the pop-up window to raise your hand.
- We will call on you to speak at the appropriate time.



How to Participate

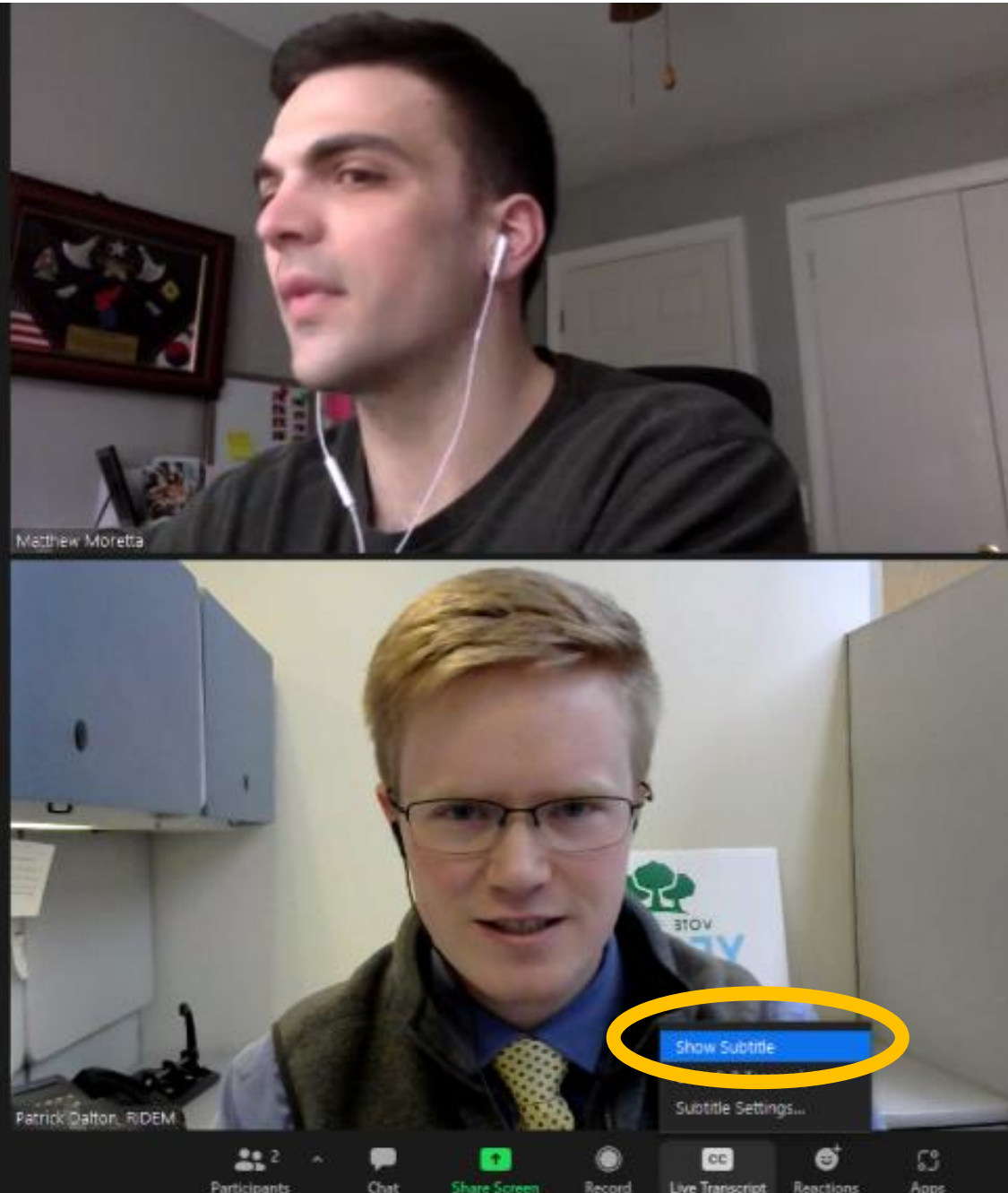
If you're calling in on the phone:

- Unmute yourself from your phone options and speak your question or comment.
- **Hit *6 to mute/unmute** yourself and speak your question or comment.
- **Hit *9 to raise hand** and we will call on you to speak.



How to Participate

- To see live captioning, click the '**Live Transcript**' icon and then select 'Show Subtitle'
- You can also change the subtitle settings from this menu.
- Please note that we are providing ASL interpretation for this meeting.



Housekeeping and Logistics



- This meeting is being **recorded** so we can be sure to capture your comments.
- We do not intend to post this recording publicly.



- Please **mute** your mic when not speaking.
- DEM will monitor noise levels and mute those who may have accidentally unmuted themselves.



- **Make space and take space**
- Each person will be allotted a **maximum of 2 minutes** to speak initially to ensure we are allowing everyone an opportunity to be heard.



- We recognize there may be inherent **power dynamics** in this conversation.
- We **encourage** everyone to voice both support and concerns. We invite you to challenge our assumptions and thinking.



- Thank you in advance for your good intentioned comments and questions and for your **respect** toward everyone present.
- Please refrain from interrupting or speaking over others – this will ensure we hear and understand all speakers.

2025 Climate Action Strategy Timeline



Purpose of Request for Information: To gather public input about the development of the State's 2025 Climate Action Strategy so that it is responsive to the needs of Rhode Islanders.

Scope of Request

1. Public Engagement

- a. Public participation with communities, businesses, and other stakeholders
- b. Interagency and intergovernmental coordination

2. Scenario Building and Projections

- a. Greenhouse gas emissions reduction projections under various scenarios (including business as usual and full implementation scenarios)
- b. Estimation of greenhouse gas reductions from specific actions and policy measures

3. Analyses

- a. Benefits analysis
- b. Low-income disadvantaged communities analysis
- c. Workforce planning analysis including just transition principles
- d. Macroeconomic/health benefits analysis
- e. Policy analysis

4. Preparation of the Final Report (and associated deliverables)



1. Public Engagement

- Will there be facilitators? Going into rec centers/community organizations to get direct feedback using a neutral party.
- Getting feedback from the community of people with disabilities is critical. Connect/partner with the RI Commission on the Deaf & Hard of Hearing & Governor's Commission on Disabilities. Meetings should be accessible with specific outreach to those populations.
- Think about all the diverse customers we have - residential, low-income, electric/gas, and those not serviced by RIE.
- Use conferences to increase engagement – go out into the community.

2. Scenario Building and Projections

- While the 2025 Strategy is important, the state needs to implement common sense strategies BEFORE 2025. Don't work on the plan in isolation – capture state's progress in 2025 report.
- The modeling should show how policies impact emissions from 2030 through 2050. Policies that may be beneficial for 2030 may not be as useful for 2050.
- Break down modeling by sector – spell out GHG reductions for each key sector.
- Check out Mass GHG report (sector specific).
- Building decarbonization is important – it's a wide issue. Do specific projections on buildings (e.g. non-profit space, etc). Break down buildings into different sectors - be more granular.
- Fully funding RIPTA (needed and important).
- Resilience of our transportation sector.
- Heat sinks – shade comfort for pedestrians and bikers. Safety is also an issue.

3. Analyses

- I would like to see more analysis of people living in areas with high risk for climate emergencies and how outreach will be done for people who may not access information in the same way as the general population.
- Resilience strategies should be addressed:- may include 'backup energy sources' eg hospitals nursing homes assisted living facilities will need significant emergency generators if electrical power goes down, as it did during sandy in NYC
- Where is the economy going? If our economy isn't totally focused on climate and resilience, will not have much of an economy. Economic analysis can be fuzzy. Too much of a focus on "business" climate – need to look bigger and avoid biases. Do it in an honest fashion.
- Pedestrian safety and infrastructure.
- There are some scenarios that NEED to happen and some that are LIKELY to happen. Will be helpful to interpret the results – make things less black and white.
- Resiliency is an urgent issue for Rhode Island Deaf, DeafBlind, DeafDisabled, and Hard of Hearing community. Need culturally competent health and behavioral health that is accessible. Need communications access and reliable info during emergencies. Social services that meet needs of this community with peer-to-peer advocates. Figure out what technologies work best to empower communities to participate. Ongoing needs assessments.

4. Preparation of the Final Report

- Please ensure it is accessible in various languages used in Rhode Island, including American Sign Language, also various modalities(written, spoken, signed, braille, etc).
- Consult with various state commissions about how to best deliver the final report.
- Have the report spell out the exact GHG reductions from each action or policy. Identify sources of funding to support various programs/policies (\$ and people). Identify when GHG reductions will begin kicking in from adoption of specific policies and programs.
- Consider feedback from at risk youth. Think about how actions can benefit at risk populations. Outreach to kids/youth – discuss opportunities for engagement and access to job opportunities.

Other Considerations

- Comments

- Comments

Act on Climate

Thank you!

Comments may be submitted: <https://climatechange.ri.gov/act-climate/public-comment>

Check back for materials related to the 2025 Climate Action Strategy under the "Act on Climate" tab on www.climatechange.ri.gov

All climate-related activities will be posted to the EC4 calendar: www.climatechange.ri.gov

Send an email to doa.climatechangeri@doa.ri.gov if you would like to be added to the listserv the EC4 uses to push out climate related announcements (events, meetings, etc.).

Next Steps

June

- **6/15** (@ midnight) SmartComment portal for RFI feedback closes
- **6/21** @ 10:30AM - RIEC4 Council meeting
- This presentation and a compilation of comments submitted via SmartComment (through June 15th) will be available under the "Act on Climate" tab on www.climatechange.ri.gov

