



Climate Pollution Reduction Grant (CPRG)

Listening Session

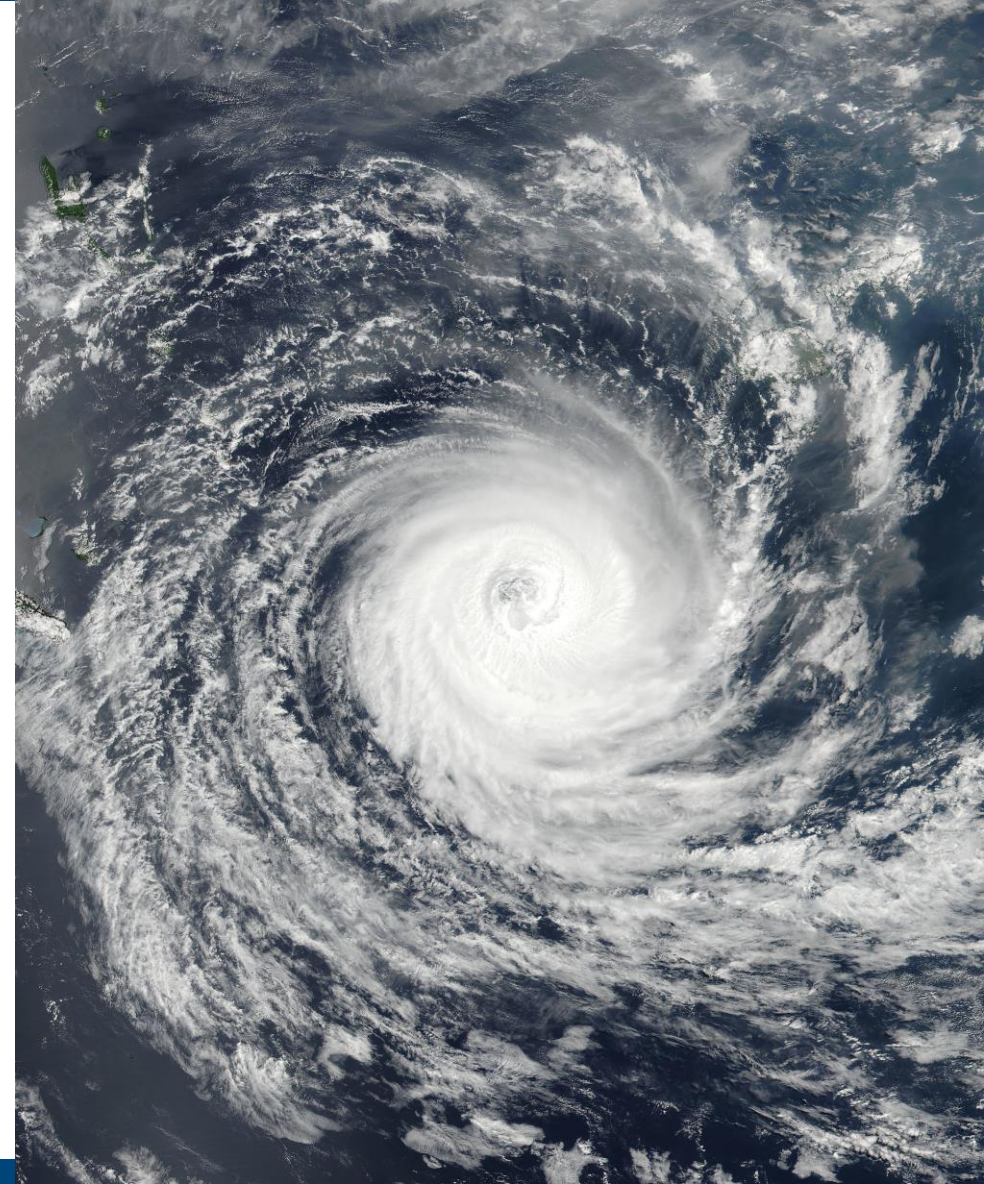
January 4, 2024

RI Department of Environmental Management

Thank you for joining us



- Today's meeting is being recorded.
- We ask that attendees stay muted until we begin the facilitated discussion later in the session.
- We will include links in the chat to key resources that are being talked about today.
- In the event we have a significant number of attendees offering input, we may limit the length of comments to make space for everyone.
- Feedback/input is welcome in the chat.
- Thank you in advance for your good intentioned comments/questions and for your respect toward everyone present.



Agenda



The goals for today's session are:

- To help interested stakeholders understand the elements of the USEPA's Climate Pollution Reduction Grant (CPRG) happening in 2024.
- To gather input from you about what Rhode Island should include in key CPRG deliverables due March 1st and April 1st 2024.



**CLIMATE
POLLUTION
REDUCTION
GRANTS**

U.S. Environmental Protection Agency

IRA Established the CPRG



The Inflation Reduction Act of 2022 (IRA) established the Climate Pollution Reduction Grants (CPRG) program through the U.S. Environmental Protection Agency, which provides \$5 billion in grants to states, local governments, tribes, and territories to develop and implement plans for reducing greenhouse gas (GHG) emissions and other harmful air pollutants.

The 2 key phases of the CPRG in 2024



Phase #1 – PLANNING GRANTS

- RI received **\$3 million** for plans to reduce GHG's.
- One (1) \$1 million grant awarded for a regional plan in the RI/Southeastern MA area.
- Tribes were also eligible and EPA awarded a planning grant to the Narragansett Indian Tribe.
- Deliverables for all planning grants:
 - Priority Climate Action Plan, or PCAP **(3/1/24)**
 - Comprehensive Climate Action Plan, or CCAP (Summer/Fall 2025)
 - Status Report (2027)

Phase #2 – IMPLEMENTATION GRANTS

- Approximately **\$4.3 billion** is available for COMPETITIVE grants to eligible applicants to implement GHG projects, programs and policies (collectively called “GHG reduction measures”) which are identified in a PCAP developed in Phase #1.
- Award values between \$2 million and \$500 million (flexibility).
- Must be for implementation of measures included in a CPRG PCAP (five-year performance period Oct 1, 2024 – Sept 30, 2029).
- Due date is **4/1/24**.

Link Between PCAP & Implementation Grants



- The PCAP needs to include:
 - *A GHG inventory.*
 - *A narrative report that includes a focused list of near-term, high-priority, implementation ready measures to reduce GHG emissions. Estimated GHG reductions must be included!*
 - *A low-income and disadvantaged communities (LIDAC) benefits analysis.*
 - *A review of authority to implement –*
 - *Whether the applicant has existing statutory or regulatory authority to implement the measure, or whether such authority still must be obtained.*



An application to EPA for Implementation Grant funding for selected measures within the PCAP.

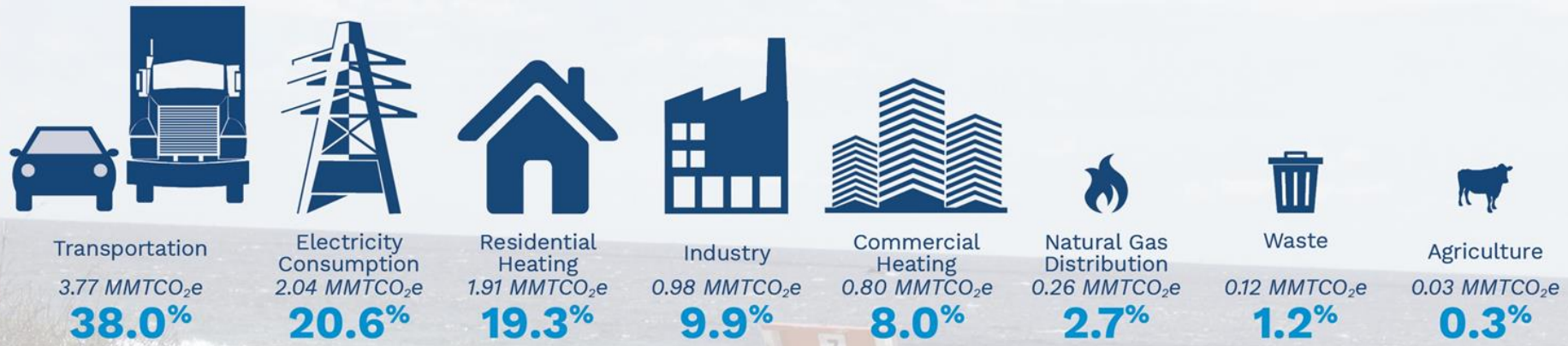
**PCAP due
3/1/24.**

**Implementation
Grant due 4/1/24.**

Overview of 2020 Emissions



Gross GHG Emissions by Economic Sector in 2020



2020 Net GHG Emissions

9.24*
million metric tons of CO₂e

*Net emissions equal the sum of gross emissions and removals. Sector totals may not align with net total due to rounding.

2020 Greenhouse Gas Removals

Land Use, Land Use Change & Forestry (LULUCF)



-0.68 MMTCO₂e

7.4%

of gross GHG emissions offset by LULUCF

1990 - 2020 Change



Statewide Net GHG Reductions

-20.1%

CCAP Due in 2025



Comprehensive Climate Action Plan (CCAP) Requirements



A GHG inventory (complete)



GHG emission projections



GHG reduction targets



Quantified GHG reduction measures



A benefit analysis for the full geographic scope and population covered by the plan



A low-income and disadvantaged communities benefits analysis



A review of authority to implement



A plan to leverage other federal funding



A workforce planning analysis

Eligible Sectors



- 1) Transportation Sector
- 2) Electric Power Sector
- 3) Buildings Sector (Commercial & Residential)
- 4) Industrial Sector
- 5) Waste, Water, and Sustainable Materials Management Sector
- 6) Agricultural Sector
- 7) Carbon Removal



See pages 9-11 of the CPRG Implementation 'Notice of Funding Opportunity' for examples of projects available for funding within these sectors/categories (*link in the chat*)

Climate Pollution Reduction Grant



Goals -

- Ambitious measures that will achieve significant GHG reductions by 2030.
- Achieve co-benefits, especially in LIDAC communities.
- Complement other funding sources.
- Innovative projects that are replicable and can be scaled up.

Types of Projects -

- New, stand-alone GHG reduction measures.
- Expansion of an existing GHG reduction measure.
- New GHG measure that is already partially funded but needs additional funds.
- Can include one or more GHG reduction measures.
- Can include measures that reduce GHG emissions or enhance carbon removal.

CPRG Implementation Grant Tiers



Table 1: Grants Ranges and Funding by Tier

Tier	Grant Ranges	Funds Targeted for Each Tier	Anticipated Number of Grants to be Awarded
Tier A	\$200,000,000 – \$500,000,000	\$2 billion	4-10
Tier B	\$100,000,000 – \$199,999,999	\$1.3 billion	6-13
Tier C	\$50,000,000 – \$99,999,999	\$0.6 billion	6-12
Tier D	\$10,000,000 – \$49,999,999	\$0.3 billion	6-30
Tier E	\$2,000,000 – \$9,999,999	\$0.1 billion	10-50

The actual award amounts, total amount of funding, and number of awards made under each of the tiers described in this section may differ from the estimated amounts for many reasons including but not limited to the number of meritorious applications received in each tier, Agency priorities, and funding availability. In addition, EPA reserves the right to increase or decrease (including decreasing to zero) the total dollar amount for awards under each tier.

Facilitated Discussion

What near-term, high-priority, implementation ready measures to reduce GHG emissions should RI include in its plan (due 3/1/24) and consider asking for implementation dollars (due 4/1/24)?

Priority Measures to Include in PCAP / Implementation Funding



TRANSPORTATION

- **Biomass based diesel for city/muni fleets (blended or renewable). Will immediately reduce emissions; addresses PM issues. Incentivize adoption. Consider who will this investment will benefit.**
- **People focused investments.**
- **Investments RIPTA may need.**
- **Adequately funding Bike Mobility Plan and TMP. +**
- **Electrify Charging Incentive Program – bring it back. Other states have such programs.**
- **Expand DRIVE EV program.**
- **Fleet electrification for state and muni fleets (esp heavy duty and diesel vehicles). + Farm equipment and food/farm transportation vehicles.**
- **Port of Prov – incentivizing change over of fleet vehicles. Include vehicles coming into the port.**
- **Bike lanes.**
- **Invest in RIPTA – equity and efficiency. Bus stop improvements (will help with mode shift).**
- **Micro mobility.**
- **Community planning to improve flow of traffic through key areas (especially in LIDAC areas); safety issues are also a concern.**
- **Electrify school buses (equity issues); battery storage for bus fleets.**
- **Fishing industry concerned about extraction of minerals needed for electrification.**
- **Marine engines – are unique; think about biomass.**
- **Can I become a center for innovation around these topics.**
- **Microgrids – feasibility study (fishing ports); make them interconnected; DG. Leverage built infrastructure to provide additional services.**
- **Right to Repair act – fixing EVs can be complicated. Legislation? Will encourage reuse.**

Priority Measures to Include in PCAP / Implementation Funding



BUILDINGS (COMMERCIAL AND RESIDENTIAL)

- This sector is the most lacking; needs significant attention:
 - Building performance standards (for larger buildings).
 - Expanding Clean Heat RI incentive program.
 - Networked geothermal (pilots)
 - Clean Heat Standard for RI. +
- Assess the prison grounds - what buildings can be updated. New buildings that could be added for benefit of recently released / others on Pastore Complex.
- PCPA is very important; need to move the needle for 2030.
- Natural gas hookup ban / piloting issue raised in Future of Gas.
- Commercial heating – many of the same issues apply.
- All electric buildings are \$\$\$ efficient. Workforce development to help reduce obstacles to building all electric buildings.
- RI's Econ Dev Plan; links to affordable housing. Set high climate related standards for affordable housing development. Link plans so they flow down to muni plans (and required pieces).
- Selective demolition and deconstruction (to reduce waste) in building sector.
- Replicate EE programs specifically for electrification of buildings; one stop shop for individuals interested in electrification.
- Translating technical info for volunteers and local boards/commissions.
- Set a standard for clean communication with muni boards, etc.
- Close coordination needed due to key linkages with electrical system (to protect integrity of the grid). Divert expenses that might other end up on consumers bills (might increase competitiveness of RI's application).
- Rental community – ensuring they can access programs.
- Building clean materials – carbon footprint of materials used should be considered (health considerations).
- Maximize investments in muni buildings and schools, hospitals, universities (renewables).
- Solar car canopies for parking lots. (specifically mentioned Rt. 2 & south to EG). Can be sued to upgrade our primary commercial corridor; showcase what can be done.
- Commercial recycling – incentivize investments to raise rates (“not a stick”); incentives. Combines with other sustainability programs.

Priority Measures to Include in PCAP / Implementation Funding



ELECTRIC POWER SECTOR

- **Close coordination needed due to key linkages with electrical system (to protect integrity of the grid). Divert expenses that might otherwise end up on consumers bills (might increase competitiveness of RI's application). Do it in a way that is affordable.**
- **Look to locally owned and controlled investments; Eliminating unnecessary limits on # of solar panels. Car canopies; conduit power in storm system; utilize local built infrastructure to increase RE production and efficiencies. +**
- **Offshore wind - only resource at scale for significant RE production. +**
- **Consider large impacts associated with FF extraction.**
- **More community oversight to ensure equity. RI's size puts us in unique position to do this.**
- **LIDAC communities – look at first and foremost (e.g. replacing leaking underground pipes).**
- **Quality jobs/work force development.**
- **Ocean spatial planning – not in BOEM requirements. It could really benefit fishing community preserve its interests. Will help reduce tensions around this important issues.**

Priority Measures to Include in PCAP / Implementation Funding



Waste, Water, and Sustainable Materials Management Sector

- Seriously reduce food waste going into the landfill. RI has a growing compost industry. We need municipal buy-in. How do we get them to run composting systems?
- Encourage more diversion – need state capacity to move this forward.
- Integrate CPRG plans with the State Guide Plan (Solid Waste).; ensure proper accountability for carbon emissions in the waste stream.
- Make sure recycling of materials is done in responsible markets; don't push our recycling onto disadvantaged communities in far distant places.
- How can tilapia used to clean resources (and then as a food resource).
- Double down on April Brown's comments; look at CEJST tool. Look to move benefits to key communities (investments, dollars). Emphasize these elements for the benefit of RI's application.
- Composting; plastic garbage too (Zero Waste PVD). Work with food businesses for bulk purchasing of compostable carry-out material. Demonstration project in Upper South PVD. (SCLT)
- SMM – recycling textiles – could promote Product Stewardship in this area. Coordinate with NEWMOA.
- WWTF – biggest energy user in some communities. Upgrade EE – big benefits. Helps with overall infrastructure integrity.
- Life Cycle Analysis (LCA) – incorporate into procurement and use. Used more in Europe.

Priority Measures to Include in PCAP / Implementation Funding



INDUSTRIAL

- N/A

Priority Measures to Include in PCAP / Implementation Funding



AGRICULTURAL

- Likes the phrase “NWL; expand to + waters too!
- Ocean estuaries/blue carbon. Links to fisheries.
- Carbon dioxide removal – new but explore (both +/- benefits). Keep on radar screen as it emerges. Better understand linkages.
- Food security – farm to table/institution. Good food purchasing programs. Creating equitable and transparent food systems. Change the systems to avoid negative impacts on vulnerable populations. Instead promote local. Raise up these types of values.
- Soil health.
- Nurseries and turf – not treated the same as other ag. institutions.
- Golf courses – bring them “up to par” on GHG issues.
- Land trusts – the amount of \$ available for agriculture land is low.
- Promote farmers markets – linkages with local land protection.
- Land acquisition.
- Farmland access in LIDAC communities. Create a fund to allow underserved groups to access funding; bridge loans.

CARBON REMOVAL

- Green Infrastructure/ Community Gardens – investments; develop new community gardens and urban farms in urban/LIDAC communities.

Thank you!



Comments may be submitted via SmartComment: <https://ri.commentinput.com?id=BjK7h6Rfx2>

All climate-related activities/meetings will be posted to the EC4 calendar:
www.climatechange.ri.gov

CPRG Questions?

Elizabeth Stone
elizabeth.stone@dem.ri.gov

Rachel Calabro
rachel.calabro@dem.ri.gov