



Climate Pollution Reduction Grant (CPRG)

PCAP Updates

January 2024

RI Department of Environmental Management

Priority Climate Action Plan



Phase #1 – PCAP

- This plan must include measures that will be in any implementation grant submitted by Rhode Island to the EPA
- Requires GHG reduction calculations for each measure through 2030 and 2050 with a priority for shorter-term reductions
- Must describe benefits to Low Income and Disadvantaged (LIDAC) communities
- Due date is **3/1/24**

Phase #2 – IMPLEMENTATION GRANTS

- Approximately **\$4.3 billion** is available for COMPETITIVE grants to eligible applicants to implement GHG projects, programs and policies which are identified in a PCAP
- Grants require a cost/benefit calculation of GHG reductions/\$\$ spent
- There is an opportunity for coalition grants with multiple states
- Five-year performance period Oct 1, 2024 – Sept 30, 2029
- Due date is **4/1/24**.

CPRG Implementation Grant Tiers



Table 1: Grants Ranges and Funding by Tier

Tier	Grant Ranges	Funds Targeted for Each Tier	Anticipated Number of Grants to be Awarded
Tier A	\$200,000,000 – \$500,000,000	\$2 billion	4-10
Tier B	\$100,000,000 – \$199,999,999	\$1.3 billion	6-13
Tier C	\$50,000,000 – \$99,999,999	\$0.6 billion	6-12
Tier D	\$10,000,000 – \$49,999,999	\$0.3 billion	6-30
Tier E	\$2,000,000 – \$9,999,999	\$0.1 billion	10-50

The actual award amounts, total amount of funding, and number of awards made under each of the tiers described in this section may differ from the estimated amounts for many reasons including but not limited to the number of meritorious applications received in each tier, Agency priorities, and funding availability. In addition, EPA reserves the right to increase or decrease (including decreasing to zero) the total dollar amount for awards under each tier.

Climate Pollution Reduction Grant



Goals -

- Measures that will achieve significant GHG reductions by 2030.
- Favorable cost/benefit
- Achieve co-benefits, especially in LIDAC communities.
- Complement other funding sources.
- Innovative projects that are replicable and can be scaled up.

Types of Projects -

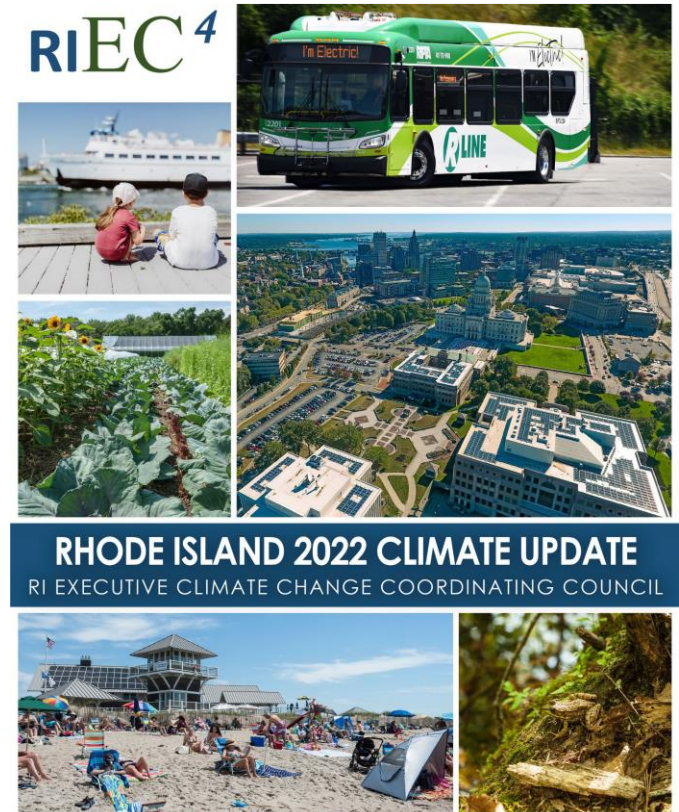
- New, stand-alone GHG reduction measures.
- Expansion of an existing GHG reduction measure.
- New GHG measure that is already partially funded but needs additional funds.
- Measures that enhance carbon removal.

Climate Pollution Reduction Grant



Measure Identification

- One-on-one meetings with EC4 agencies and departments, City of Providence
- Priorities from 2022 climate plan update and public feedback, other state plans, RIIB
- Public comment from Smart Comment portal
- Public Listening Session on January 5th (90+ attendees)
- Coordination with SRPEDD and municipalities engaged with the MSA application
- Coordination with other states on potential coalition applications



RHODE ISLAND 2022 CLIMATE UPDATE
RI EXECUTIVE CLIMATE CHANGE COORDINATING COUNCIL

AS APPROVED DECEMBER 15, 2022 BY THE RIEC4

Climate Pollution Reduction Grant



Sector: Transportation

Electrify Transportation

Medium and Heavy-Duty vehicle rebates

Provide incentives based on percentage of incremental costs of electric medium and heavy-duty trucks.



EV rebates

Add funds to the DRIVE EV program, including higher low-income incentives and used vehicles. Add commercial van incentives that would support small business using a revenue cap, number of employees, or M/WBE certification.

Transition to low and no-carbon fuels in state and municipal vehicles and maintenance equipment

Provides incentives based on incremental costs for public fleet vehicles, and maintenance equipment with two-stroke engines. Training for maintenance staff.



Climate Pollution Reduction Grant



Sector: Transportation

Charging Infrastructure

Medium and Heavy-Duty charging infrastructure rebates

Along with medium and heavy-duty truck rebates, the program would offer incentives for charging infrastructure.

Re-establish the Electrify RI program to incentivize charging infrastructure in communities

The Electrify RI program offers incentives for charging infrastructure to municipalities, businesses, multi-unit apartments, non-profits, and other agencies. Could also include make-ready incentives for electrical upgrades.



Climate Pollution Reduction Grant



Sector: Transportation

Mobility, Transit, and Mode Shift

E-mobility pilot projects in communities

Pilot projects for shared mobility that include on-demand and fixed-route rideshare services. Uses neighborhood electric vehicles for short-range trips.

Bus stop improvements and amenities

Support RIPTA to upgrade high-ridership bus stops in key locations with new shelters, seating, lighting, signage, and accessibility.

Transit Fare subsidies

Additional funding to RIPTA for the Wave to Work, Low-Income Partnership Program, and Residential Partnership Program. Would provide free and discounted passes for workplaces, transit-oriented developments, and social service agencies.



Climate Pollution Reduction Grant



Sector: Buildings

Incentivize electric space and water heating technologies including air and ground source heat pumps

Support adoption of residential heat pumps and weatherization services through the Clean Heat RI program.

Additional incentives would increase the low-income pre-weatherization cap for electrical upgrades to make more homes qualified for both weatherization services and heat-pump upgrades.

Promote electric air or ground-sourced heat pumps for state and municipal buildings

This project could include state park facilities, BHDDH facilities and group homes, state office buildings, town halls, schools, libraries, and other buildings.



Climate Pollution Reduction Grant



Sector: Buildings

Support efficiency improvements and building electrification at state and municipal facilities

Support solar, batteries, and energy efficiency measures

This project would support the addition of renewables + storage for increased resilience, solar carports, LED streetlights and other efficiency measures, and vehicle-to-grid and other technologies. It could also fund shared municipal energy managers.

Sector: Waste and Sustainable Materials Management

Support Food Waste Diversion Strategies

Sector: Natural and Working lands

Support Urban Tree Canopy Strategies



Thank you!



Comments may be submitted via SmartComment: <https://ri.commentinput.com?id=BjK7h6Rfx2>

All climate-related activities/meetings will be posted to the EC4 calendar:
www.climatechange.ri.gov

CPRG Questions?

Elizabeth Stone
elizabeth.stone@dem.ri.gov

Rachel Calabro
rachel.calabro@dem.ri.gov